

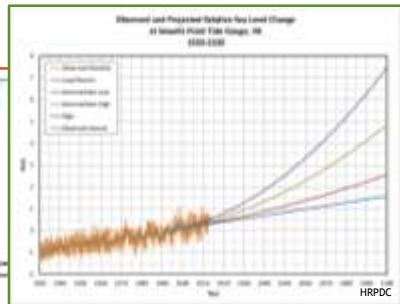


# INTERGOVERNMENTAL PILOT PROGRAM: Update

April 21, 2015




# Federal Facilities & SLR in Hampton Roads



Courtesy of HRMFEA


3

## Intergovernmental Pilot Program



MISSION

- Develop a regional “WHOLE OF GOVERNMENT” and “WHOLE OF COMMUNITY” approach to SLR Preparedness and Resilience Planning by June 2016




VISION

- An **intergovernmental planning organization** that can effectively coordinate the sea level rise preparedness and resilience planning of Federal, state and local government agencies and the private sector, taking into account the perspectives and concerns of the citizens of the region.


4

## Timeline




Phase I

- Charter Signed
- Stakeholder Engagement & Fact Finding
- Committees Develop Work Plans & Deliverables



Phase II

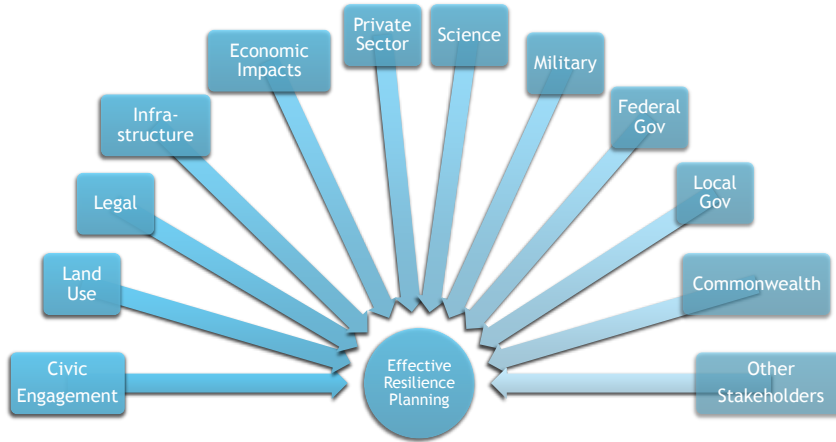
- Focus on Regional and Model Deliverables
- Develop Collaborative Organization
- Data Integration



Future

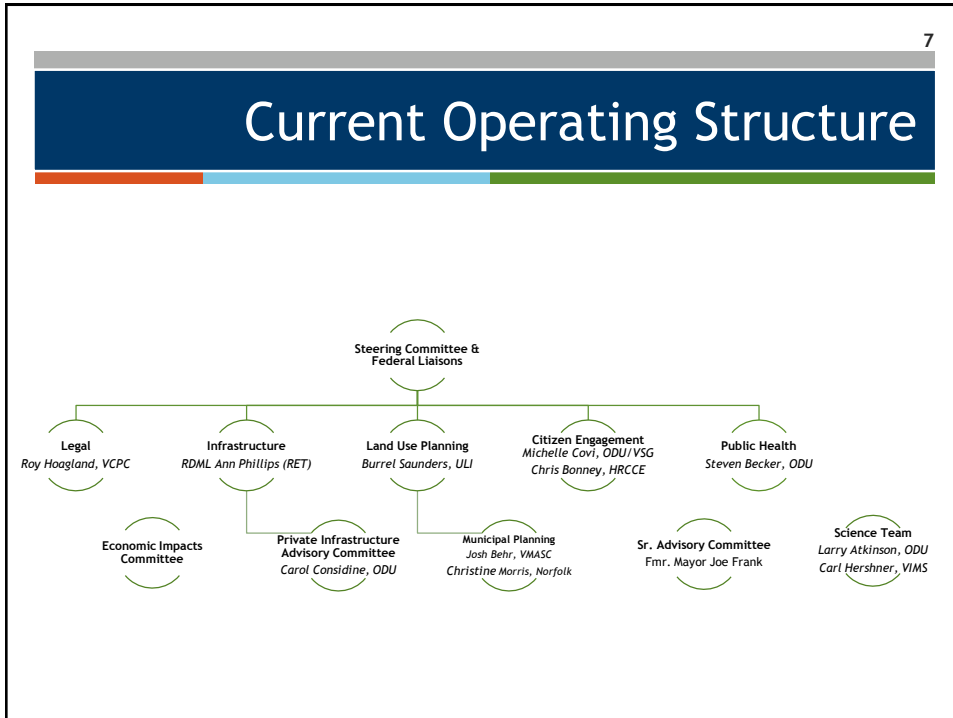
- Continued “Whole of” Collaboration for Effective and Efficient SLR Planning in Hampton Roads
- Network of Regions

# Whole of Government & Community



# Local Leadership

STEERING COMMITTEE	
Mayor Kenneth Wright	Chair, NRPDC; Mayor, City of Portsmouth
Randy Keaton	Interim Executive Director, NRPDC
Heather Wood	Sustainability Director, Virginia Port Authority
Jim Redick	Co-Chair Secure Commonwealth Panel Sub-Committee on SLR; Emergency Preparedness & Response, City of Norfolk
Evan Feinman	Deputy Secretary of Natural Resources, Commonwealth of Virginia
Bob Fallon	Director, Facilities and Waterfront Support, Newport News Shipyard, Huntington Ingalls
FEDERAL LIAISONS	
COL Paul Olsen	USACE, Commander Norfolk District
CAPT George Banner	Commander USCG Shore Infrastructure Logistic Center
Teddie Thorogood	CPDS
CAPT Pat Rios	Commanding Officer NAVFAC Norfolk
COL John Allen	Commander Joint Base Langley-Eustis
RDML Ricky Williamson	Commander Naval Region Mid-Atlantic
CONVENER	
Ray Toll	Director for Coastal Resilience Research, Old Dominion University



9

## Milestones

- Summer 2014**

  - Pilot Kickoff @ TechSurge on June 3, 2014
  - Rising to the Challenge: Bipartisan Forum Organized by Sen. Kaine
  - Governors Climate Commission Announced
  - Website Launch: [www.centerforsealevelrise.org](http://www.centerforsealevelrise.org)
- Fall 2014**

  - Charter Drafted and Signed
  - Sen. Kaine sends letters to agencies urging participation in Pilot Project
  - Recurrent Flooding Sub-Panel Recommendations Submitted to SCP
- Winter 2014-2015**


  - FEMA NEP Tabletop Exercise
  - HRPDC Votes to Officially Participate in the Pilot
  - Committees Begin Work Engaging Stakeholders and Developing Workplans
- Spring 2015**

  - Continued Committee Work
  - FEMA FFRMS Public Listening Session
  - ULI Resilient Region Reality Check

10

## Proposed Pilot Specific Deliverables

- ❖ Charter (October 2014)
- ❖ Report of Lessons Learned and Issues Encountered and Overcome
- ❖ Draft Organizational Structure for Regional SLR Planning
- ❖ MOU Establishing Intergovernmental Planning Organization



11

## Proposed Regional Deliverables

- ❖ Trusted, Neutral Venue for Discussion, Collaboration, Planning, and Action
- ❖ Draft Principles for Living With the Water in HR
  - ❖ This is not a challenge that can be fixed, but a dynamic environment to which we must continuously adapt
  - ❖ Common (and periodically dry) ground for ongoing communication and collaboration for truly regional SLR strategic planning and action
- ❖ Clearing House Tailored for Hampton Roads
  - ❖ Localized Scientific Projections, Mapping, Simulation, etc.
  - ❖ **Integrated network of SLR & Subsidence Measurements (real-time and near-real-time)**
  - ❖ Analyses of Regionally Relevant Legal Issues & Policy Guidance Where Appropriate
  - ❖ Framework to Understand Critical Infrastructure Interdependencies in HR



12

## Proposed Model Template Deliverables

- ❖ “Whole of Government” Template for Regional Collaboration
- ❖ Customizable Base Level “Whole of Community” Engagement & Communications Template
- ❖ Public Health Resilience Toolkit
- ❖ Land Use Vulnerability Index
- ❖ Infrastructure Prioritization Toolkit (Resiliency Recommendations)
- ❖ Identification of Legal Impediments to Regional Planning and Action & Potential Solution Recommendations



## On the Horizon

- ❖ Legal Primer: Reference Guide for SLR Planning
- ❖ Infrastructure Interdependencies
- ❖ Engage New Stakeholders:
  - ❖ Public Health
  - ❖ Economic Impacts & Development
- ❖ Long-lasting Networks within Hampton Roads and with similarly situated regions to facilitate effective planning.

## Proposed Center for Sea Level Rise

- ❖ In partnership with VIMS
- ❖ Integrate Federal, state, and local data sources creating real-time or near-real-time climate resiliency monitoring and planning network for the Hampton Roads Region.
- ❖ Use data to enable both emergency and long-term decision-making through street level predictions and more.
- ❖ Develop the network as a national model for adaptation to sea level rise.
- ❖ To provide technical assistance in implementing this model in other US regions that experience sea level rise.

# Contact



**Ray Toll**

*Director of Coastal Resilience Research*

[rtoll@odu.edu](mailto:rtoll@odu.edu)

(757) 683-6650

**Emily E. Steinhilber**

*Assistant Director of Coastal Resilience Research*

[esteinhi@odu.edu](mailto:esteinhi@odu.edu)

(757) 683-5031

Online

[www.centerforsealevelrise.org](http://www.centerforsealevelrise.org)

[www.facebook.com/centerforsealevelrise](https://www.facebook.com/centerforsealevelrise)

@ODUsealevelrise

